

BBX Minerals Ltd

ASX: BBX

Level 1
35 Havelock Street
West Perth WA 6005

Telephone +61 8 6955 2955
Fax +61 8 6210 1153

Av Jornalista Riccardo Marinho
360 Ed Cosmopolitan Sala
Barra da Tijuca
Rio de Janeiro

Telephone +55 21 2439 5700

Web:
www.bbxminerals.com.au

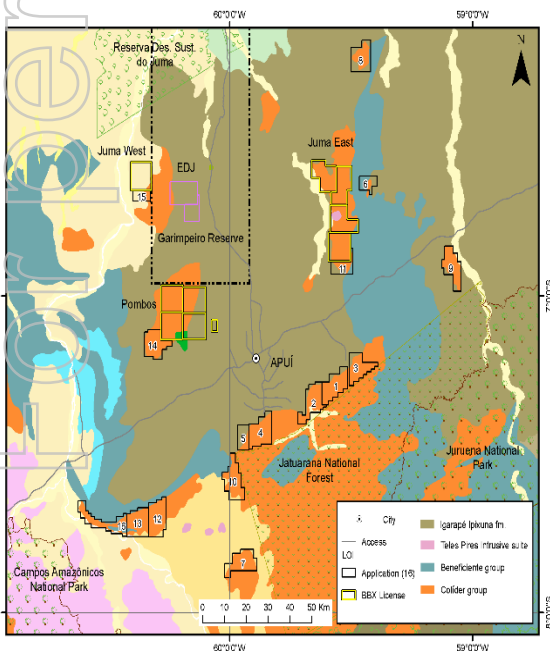
Email:
Jeff.Mckenzie@bbxminerals.com.au

Brazil Projects:

Juma East: copper- gold- silver

Eldorado Do Juma: gold

Pombos: copper –gold



**ASX MEDIA RELEASE 16TH
JANUARY 2015**

- **BBX EXTENDS OPTION ON 16 EXPLORATION LEASES AT APUI**
- **BBX RECEIVES NOTIFICATION FROM ENGEP AND ENGE GOLD REGARDING CHAPADA SALES AGREEMENT OPTION ELECTION**

BBX Minerals Ltd (BBX), via its 100% owned subsidiary Mineracao BBX do Brasil Ltda, and Raquel Correia da Silva (Seller) have signed a 90 day extension to the Letter of Intent for BBX to acquire 16 exploration licences under application in the Colider group (Apui Region), located within a radius of 120km from Apui.

The extension does not affect the previous terms and conditions of the LOI which was announced by BBX on 9th October 2014.

BBX Minerals Ltd (BBX) via its 100% owned subsidiary Mineracao BBX do Brasil Ltda, has received notification from ENGEP Engenharia e Pavimentaco Ltda (ENGEP) and ENGE GOLD Mineracao Ltda (ENGE GOLD) that they have elected option 1, which extinguishes the total outstanding receivable payments due to BBX of R\$2,400,000 (approximately AUD 1,132.075) under

the Chapada sales agreement, via the advance payment of R\$2,000,000.(approximately AUD 943,000) announced on 7th April 2014.

Jeff McKenzie
Acting CEO
BBX Minerals Ltd
+64 22 3421271

About BBX Minerals Ltd

BBX Minerals Limited (ASX: BBX) is a mineral exploration and mining company listed on the Australian Securities Exchange. Its major focus is Brazil, mainly in the southern Amazon, a region BBX believes is vastly underexplored with high potential for the discovery of world class gold and copper deposits.

BBX's key asset is the Juma East Gold Project in the Apuí region – Amazonas State. The company has 384 km² of exploration tenements within the Colider Group, a highly prospective geological environment for epithermal gold deposits and Cu-Au porphyry deposits. The region is under explored and could provide BBX with a pipeline of high growth, greenfields gold discoveries.

For personal use only